

Agriculture and the Wisconsin Economy

Agricultural Outlook Conference, 2020

Steven Deller

Center for Community and Economic Development
Economic Development Administration University Center
Department of Agricultural and Applied Economics
University of Wisconsin-Madison

January 2020





The Contribution of Agriculture to the Wisconsin Economy: An Update for 2017

June 25, 2019



Steven C. Deller

Department of Agricultural and Applied Economics
Center for Community Economic Development
University of Wisconsin-Madison

to Wisconsin

Agriculture's Contribution to The Wisconsin Economy 2017

Agriculture has historically been considered a backbone of the Wisconsin economy. Over time, however, other components, such as the service producing sectors including tourism-

Wisconsin

Food Processing and the Wisconsin Economy: Small or Large Businesses

The recent update of the Contribution of Agriculture to the Wisconsin Economy revealed that between 2012 and 2017 the total contribution increased approximately 10% or 1.5 billion dollars. This growth is due to an increase in the number of food processing businesses and their output.

to Wisconsin

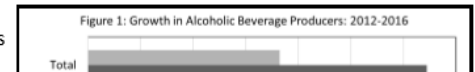
Agriculture's Contribution to The Wisconsin Economy: Fruit and Vegetable Farming

While Wisconsin is worthy of being called the "Dairy State", one of the strengths of the state's agricultural sector is its production of fruit and vegetable products.

to Wisconsin

Agriculture's Contribution to The Wisconsin Economy 2017 Breweries, Wineries and Distilleries

One of the fastest growing agricultural sectors in Wisconsin is the producers of alcoholic beverages (breweries, wineries and distilleries). As recently as 2012 there were only 73 such businesses in Wisconsin, four short years (2016) latter the number of has increased to 129 (Figure 1). Part of this growth can be attributed to



- “All agriculture”, combined on-farm and food processing, contributes **\$104.8 billion** to industrial revenues (**16.4% of the state total**), **435,700 jobs (11.8%)**, **\$22.5 billion to labor income (11.3%)**, and **\$37.6 billion to total income (11.6%)**.
- On-farm activity contributes **\$22.0 billion** to industrial sales or revenue (3.5% of the state total), **154,000 jobs (4.1%)**, **\$5.8 billion to labor income (2.9%)**, and **\$9.8 billion to total income (3.0%)**.
- Food processing activity contributes **\$82.7 billion** to industrial sales (13.0% of the state total), **282,000 jobs (7.6%)**, **\$22.5 billion to labor income (8.4%)**, and **\$37.6 billion to total income (8.6%)**.
- The economic activity supported by agriculture results in state and local government tax revenues of **\$2.9 billion**, which is roughly 7.4% of “own source revenues”.

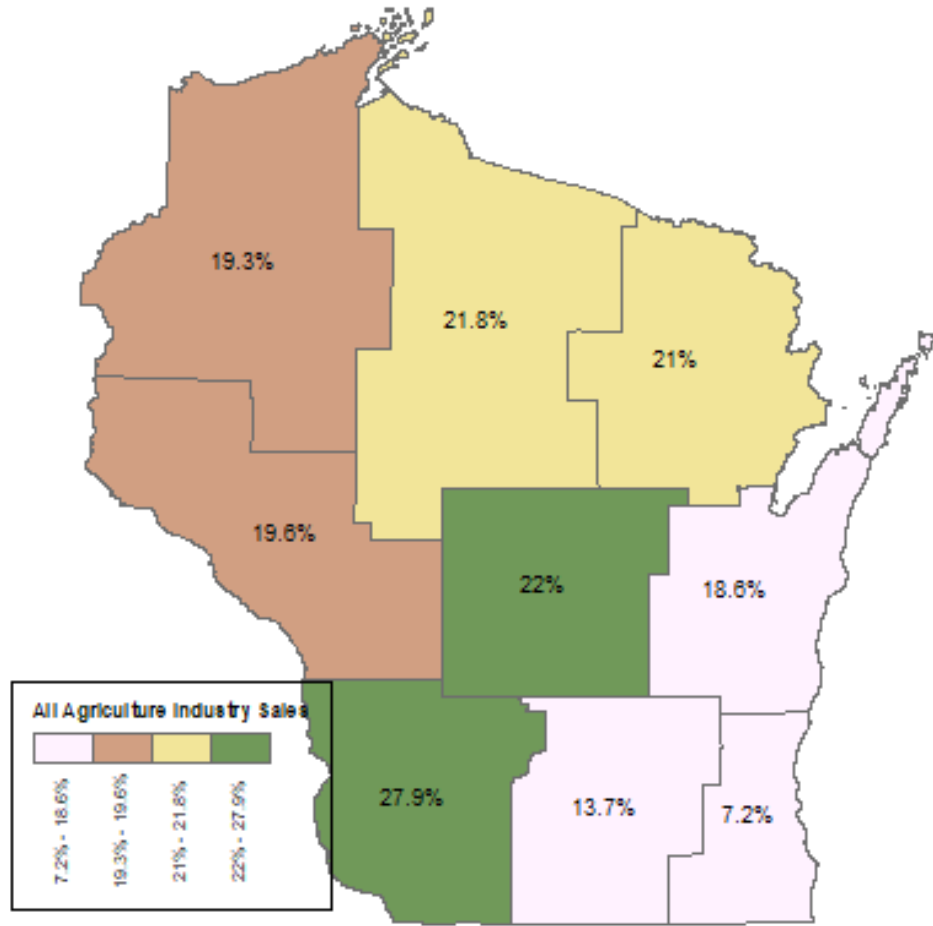


- Dairy, combining both on-farm and dairy processing, contributes **\$45.6 billion** to industrial revenues (7.1% of the state total), **157,100 jobs** (4.2%), **\$9.0 billion** to labor income (4.5%) and **\$15.1 billion** to total income (4.7%). Dairy processing accounts for roughly two-thirds of this contribution.
- The bulk of the growth in the contribution of agriculture to the Wisconsin economy between 2012 and 2017 is growth in the food processing sectors.
- Wisconsin agriculture is extremely diverse.

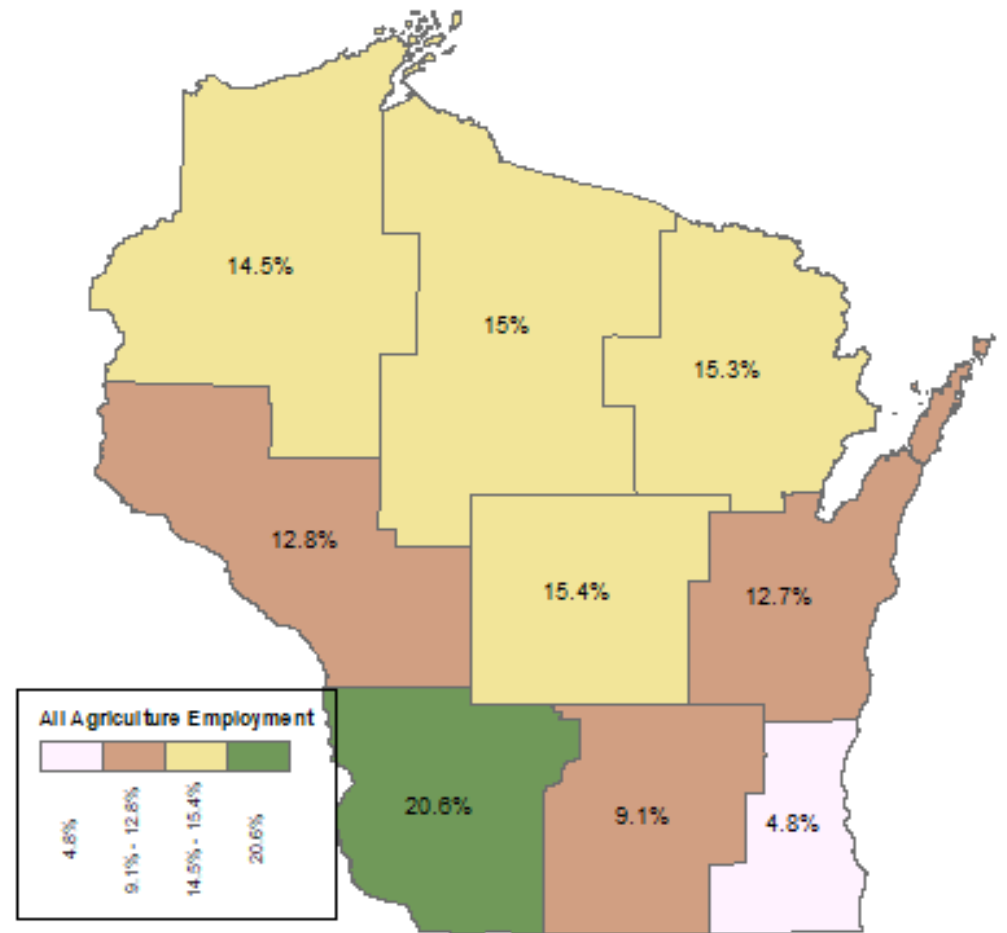


Agricultural Outlook Conference, 2020

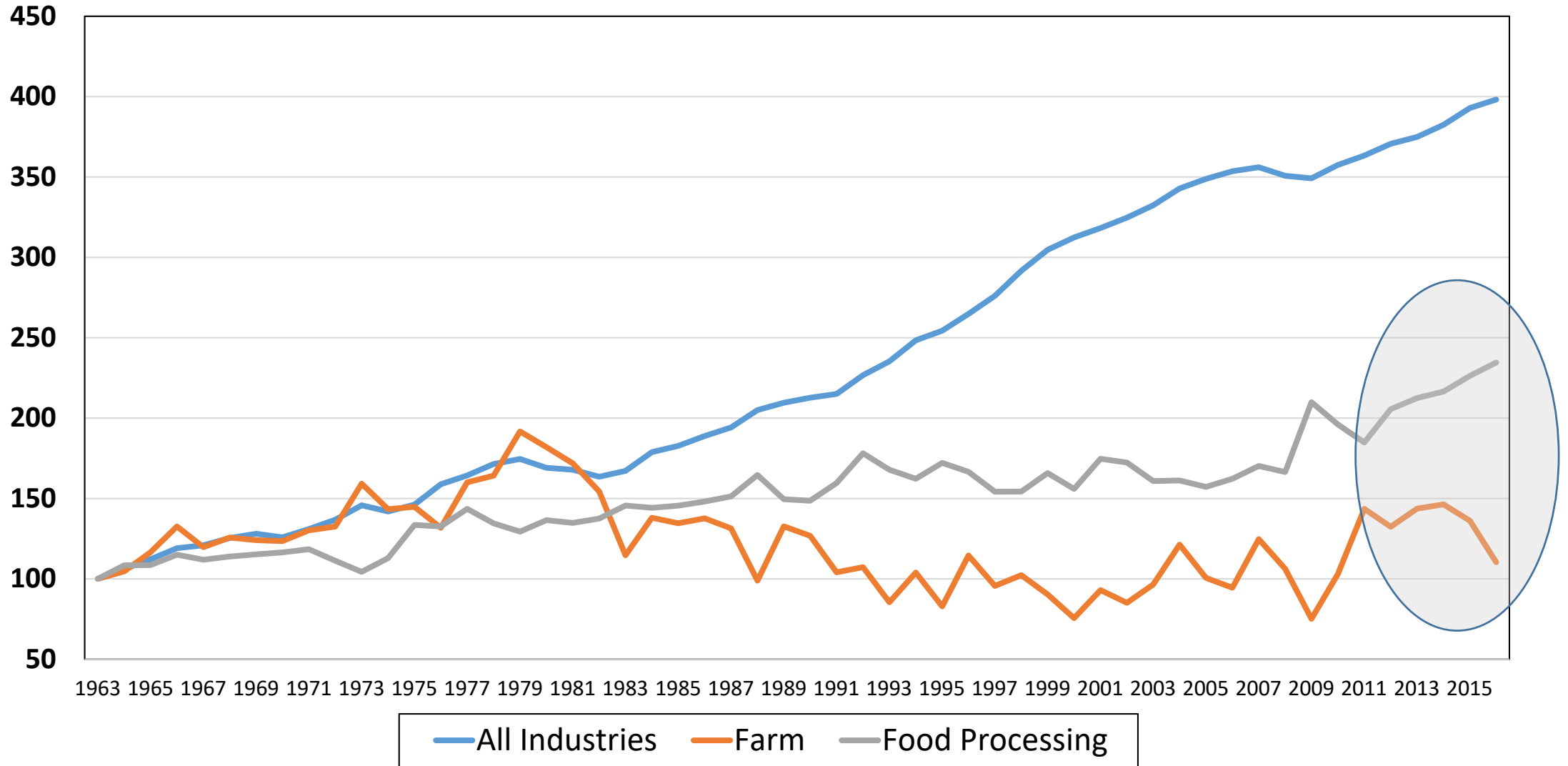
Map 1C: All Agriculture Contribution to Industrial Sales



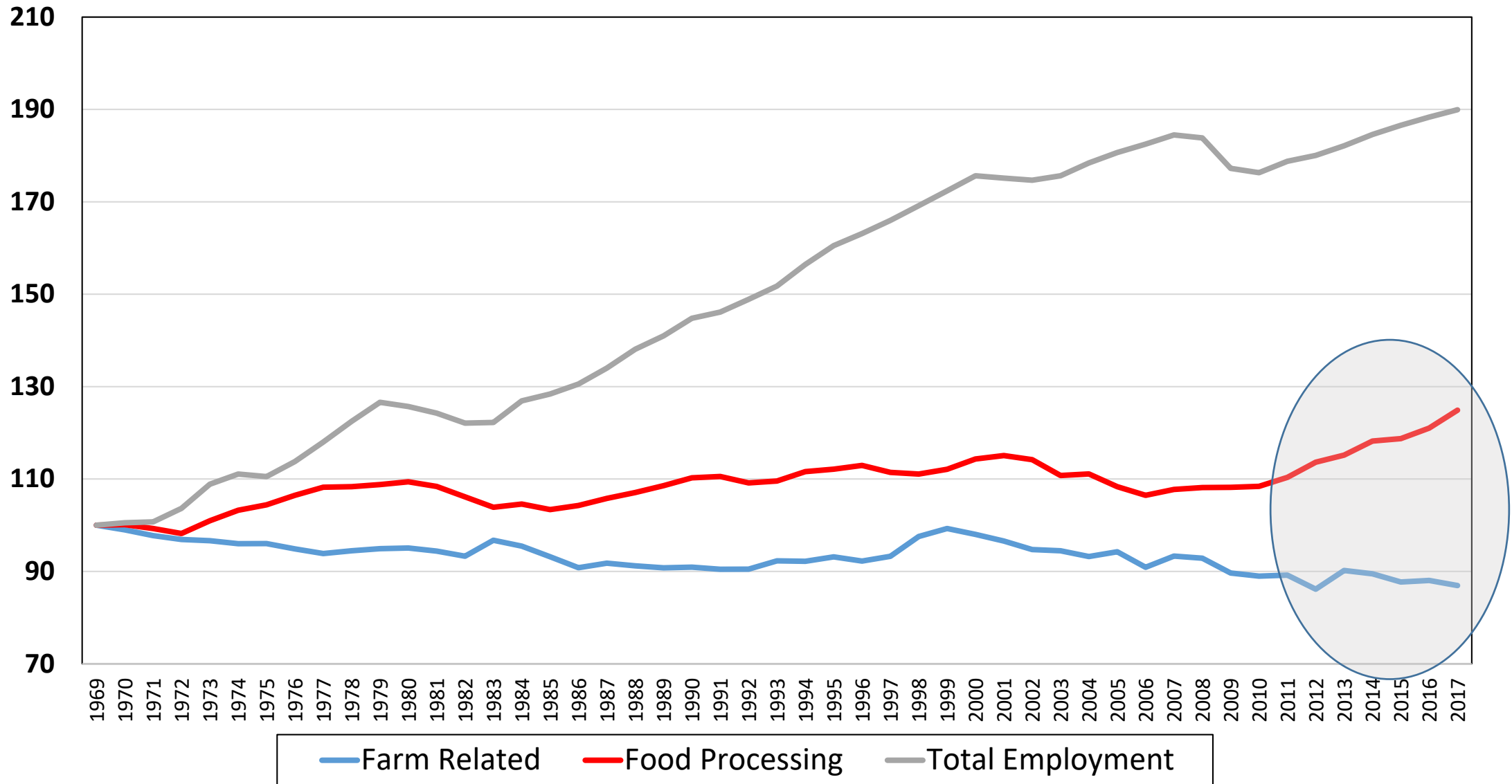
Map 2C: All Agriculture Contribution to Employment



Wisconsin Gross State Product Growth Index (Real 2016 Dollars)



Wisconsin Employment Growth Index



Thank you!

scdeller@wisc.edu



AGRICULTURAL & APPLIED ECONOMICS
College of Agricultural & Life Sciences



*A U.S. Department of Commerce
Economic Development Administration
University Center*

